

SPA BLOWER

OWNER'S MANUAL



80015-XXXX, 80016-XXXX, 80017-XXXX, 80018-XXXX, 80019-XXXX, 80020-XXXX
877.278.2797 fax 888.610.3839

THIS PAGE INTENTIONALLY LEFT BLANK.

Please read and save these instructions. Read carefully before attempting to assemble, install, operate or maintain the product described. Protect yourself and others by observing all safety information. Failure to comply with instructions could result in personal injury and/or property damage! Retain instructions for future reference.

Description

The Air Blower is designed for outdoor spa applications. It is designed for low noise and a high air flow rate. The unit is UL listed and the motor is protected with a resetting thermal overload device. The blower is designed for permanent electrical connections.

The box contains the following:

- Blower
- Mounting Bracket
- UL Approved Check Valve
- Conduit Cover Plate, Gasket, and Screws
- Instruction Manual

Unpacking/Unit Inspection

After unpacking the blower, carefully inspect for any damage that may have occurred during transit. Check for loose, missing or damaged parts.

DAMAGE TO THE UNIT DURING TRANSPORTATION IS NOT THE RESPONSIBILITY OF THE MANUFACTURER.

Important Safety Instructions

When installing and using this electrical equipment, basic safety precautions should always be followed.

READ AND FOLLOW ALL INSTRUCTIONS.

Safety Guidelines

This manual contains information that is very important to know and understand. This information is provided for SAFETY and to PREVENT EQUIPMENT PROBLEMS. To help recognize this information, observe the following symbols:

⚠ DANGER *Danger indicates an imminently hazardous situation which, if not avoided, will result in death or serious injury.*

⚠ WARNING *Warning indicates a potentially hazardous situation which, if not avoided, COULD result in death or serious injury.*

⚠ CAUTION *Caution indicates a potentially hazardous situation which, if not avoided, MAY result in minor or moderate injury.*

NOTICE *Notice indicates important information, that if not followed, may cause damage to equipment.*

General Safety Information

CALIFORNIA PROPOSITION 65

⚠ WARNING *This product or its power cord may contain chemicals, including lead, known to the State of California to cause cancer and birth defects or other reproductive harm. Wash hands after handling.*

GENERAL

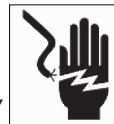
⚠ WARNING *To reduce the risk of injury, do not allow children to use this product unless they are closely supervised at all times.*

⚠ WARNING *Install blower no less than 1 foot (305 mm) above the maximum water level to prevent water from contacting electrical equipment. Install in accordance with the installation instructions.*

⚠ WARNING *Blower is designed for outdoor use. Install blower at least two feet above the ground in an area free of debris, chemicals, or sprinklers.*

ELECTRICAL

⚠ WARNING *Disconnect power before attempting to install, service, relocate or perform any maintenance. Tag and disconnect power and lock the fuse box / control panel to prevent unexpected application of power.*



⚠ WARNING *Risk of Electric Shock. Install blower at least 5 feet (1.5 m) from pool / spa water using nonmetallic plumbing.*



⚠ WARNING *To reduce the risk of electrical shock, connect the green colored wire inside the electrical box to the grounding terminal of your electrical service or supply with a continuous green insulated solid copper conductor minimum No. 8 AWG (8.4 mm2) solid copper conductor between this unit and any metal equipment, metal enclosures of electrical equipment, metal water pipe, or conduit within 5 feet (1.5 m) of the unit.*



SAVE THESE INSTRUCTIONS.

Installation Guidelines

⚠ WARNING *Failure to observe installation guidelines, could result in death or serious injury.*

See Figure 1 for recommended installation diagram.

1. Install at least 5 feet (1.5 m) from pool / spa water using nonmetallic plumbing. Install blower no less than 1 foot (305 mm) above the maximum water level to prevent water from contacting electrical equipment. Install in accordance with the installation instructions.
2. The check valve supplied with the unit must be installed in a vertical orientation above the water level in an easily accessible location for serviceability. Take care to orient the check valve with the arrow pointing in the direction of the air flow inside the pipe.
3. Use a separate dedicated 2-inch rigid PVC supply line from the blower to the spa.

**REMINDER: Keep your dated proof of purchase for warranty purposes!
Attach it to this manual or file it for safekeeping.**

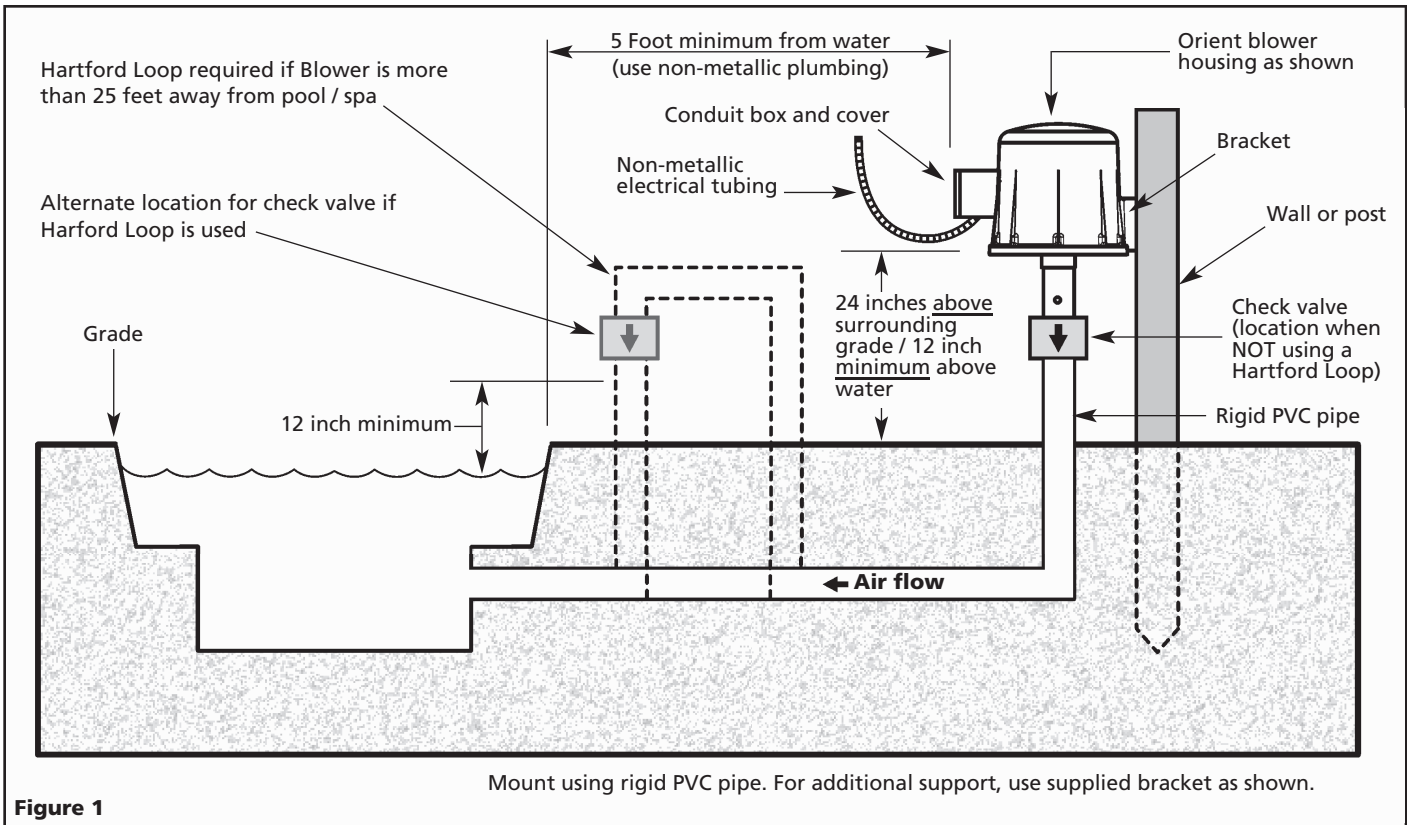


Figure 1

Installation Guidelines (Continued)

⚠ WARNING Do not glue the blower to the supply line. Glue fumes can potentially cause an explosion when the blower starts. Install a 1/4" self-tapping screw to secure the joint if necessary.

⚠ WARNING Do not install blower below water level. Blower must be at least one foot above the maximum water level.

4. Mount blower in a vertical position using vertical rigid PVC pipe as shown in Figure 1. For additional support use supplied bracket as shown in Figure 1. For warm climates, try to locate the blower in a shaded location.

⚠ WARNING If the blower is to be installed more than 25 ft from the spa, it will be necessary to install a loop that is 1 foot above the water line and as close to the spa as possible (See Figure 1).

⚠ WARNING A loop and a check valve must be installed at least one foot above the water level when supercharging water jets.

5. Verify plumbing is free of leaks before adding water to spa.
6. Do NOT install adjustable jets. Adjustable jets can cause excessive back pressure within the unit.
7. Hydrotherapy jets naturally aerate when installed correctly. Do not use blower to supplement aeration when jets have been installed incorrectly.
3. Refer to the National Electric Code Guidelines for wire size and to prevent electric shock.
4. Refer to the National Electric Code Guidelines for proper selection of wiring conduit and strain relief.
5. The blower field-wiring box is designed for non-metallic electrical tubing only. Refer to the National Electric Code Guidelines for proper selection of wiring, and strain relief.

Wiring Guidelines

⚠ WARNING Failure to observe wiring instructions, could result in death or serious injury.

⚠ WARNING All wiring and electrical connections must be performed by a qualified electrician. Installations must be in accordance with local and national codes.

1. For electrical ratings, see product decal.
2. Check the line voltage to make certain it is correct for the blower being used. Do not attempt to connect 240 VAC to a 120-volt blower; it will damage the blower and void the warranty.

6. Be certain to connect the green ground wire supplied with the blower to the ground from your electrical panel.
7. Connect remaining line wires individually to the remaining wires in the blower.
8. When wiring is complete carefully install gasket and conduit cover plate.

⚠ CAUTION Overheating, short-circuiting and fire damage will result from inadequate wiring.

Troubleshooting Chart - All repairs must be completed by licensed or certified professionals.

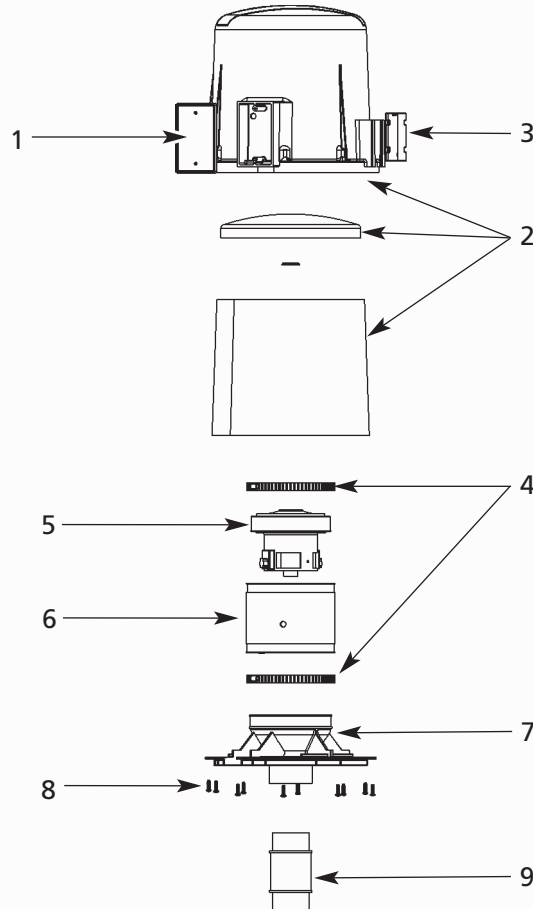
Symptom	Possible Cause(s)	Corrective Action(s)	Safety Alert
Blower will not start	<ol style="list-style-type: none"> 1. Power Off 2. Internal blower overload trips 3. Brushes worn out 4. Nuisance trips 	<ol style="list-style-type: none"> 1. Check electrical connections and fuse box / control panel 2. Disconnect power then check for restrictions or blockage in air discharge line 3. Replace motor 4. It is possible that if the blower is started and stopped repeatedly in a short time period, the thermal overload could interrupt the circuit. Allow the unit to cool and disconnect power. Restart after 5 - 15 minutes (depending on warmth of ambient conditions). 	Disconnect power BEFORE taking any corrective action(s)
Blower hums but will not run	<ol style="list-style-type: none"> 1. Rotor locked 2. Brushes worn out 3. Wrong voltage 	<ol style="list-style-type: none"> 1. Disconnect power then check for debris or foreign object lodged in blower motor 2. Replace motor 3. Verify voltage is correct for blower 	Disconnect power BEFORE taking any corrective action(s)
Blower runs but delivers little air	<ol style="list-style-type: none"> 1. Low voltage 2. Blower too small for application 3. Check valve installed incorrectly 	<ol style="list-style-type: none"> 1. Check electrical connections Verify voltage is correct for blower 2. Install additional blowers, or reduce piping restrictions 3. Re-orient check valve 	Disconnect power BEFORE taking any corrective action(s)
Internal blower overload trips	<ol style="list-style-type: none"> 1. Blocked or restricted air line 2. Check valve installed incorrectly 	<ol style="list-style-type: none"> 1. Check for debris or foreign object lodged in discharge line 2. Re-orient check valve 	Disconnect power BEFORE taking any corrective action(s)
Blower runs too slow	<ol style="list-style-type: none"> 1. Incorrect line voltage 2. Incorrect wire size 	<ol style="list-style-type: none"> 1. Check blower voltage requirements, make certain line voltage is correct 2. Verify correct wire gage is being used 	Disconnect power BEFORE taking any corrective action(s)

Replacement Parts List

For Replacement Parts, call 1-877-278-2797

Please provide following information:

- Model number
- Serial number (if any)
- Part descriptions and number as shown in parts list



Ref. No.	Description	Parts Number	QTY.
1	Conduit Cover Plate, Gasket, 2 Screws, and Wiring Diagram (Kit)	81008-001	1
2	Blower Housing with Foam Inserts (Kit)	81006-001	1
3	Bracket	28569-001	1
4	Gear Clamp	67111-001	2
5	Motor		1
	1 hp 120v	81000-001	
	1 hp 240v	81003-001	
	1-1/2 hp 120v	81001-001	
	1-1/2 hp 240v	81004-001	
	2 hp 120v	81002-001	
	2 hp 240v	80002-001	
6	Sleeve	15497	1
7	Discharge Housing	28555-001	1
8	8-16 x 3/4 inch Plastite Screw	67007-001	8
9	Check Valve	10116-001	1

LIMITED WARRANTY

For one (1) year from the date of purchase, the manufacturer will repair or replace, at its option, for the original owner any parts of its Blower ("Product") which are found upon examination by the manufacturer to be defective in materials or workmanship. This Limited Warranty covers labor for a period of one (1) year for Product sold and installed in the United States (does NOT cover service labor for removal and reinstallation of the blower). Please call 1-877-278-2797 for instructions. Be prepared to provide the model number and serial number when exercising this limited warranty. Purchaser must pay all transportation charges on Products or parts submitted for repair or replacement. All non-warranty service charges are the responsibility of the original owner. Failure to pay for non-warranty service charges will void this Limited Warranty. This Limited Warranty does not cover Products that have been damaged as a result of accident, abuse, misuse, neglect, improper installation, improper maintenance or failure to operate in accordance with the manufacturer's written instructions. All maintenance and service must be performed by service agents approved by the manufacturer. Any unauthorized alteration or repairs will void this Limited Warranty.

THERE IS NO OTHER EXPRESS WARRANTY. IMPLIED WARRANTIES, INCLUDING THOSE OF MERCHANTABILITY AND FITNESS FOR A PARTICULAR PURPOSE, ARE LIMITED TO ONE (1) YEAR FROM THE DATE OF PURCHASE. THIS IS THE EXCLUSIVE REMEDY AND ANY LIABILITY FOR ANY AND ALL INDIRECT OR CONSEQUENTIAL DAMAGES OR EXPENSES WHATSOEVER IS EXCLUDED.

Some states do not allow limitations on how long an implied warranty lasts, or do not allow the exclusions or limitations of incidental or consequential damages, so the above limitations might not apply to you. This limited warranty gives you specific legal rights, and you may also have other legal rights which vary from state to state. In no event, whether as a result of breach of contract warranty, tort (including negligence) or otherwise, shall the manufacturer or its suppliers be liable for any special, consequential, incidental or penal damages including, but not limited to loss of profit or revenues, loss of use of the products or any associated equipment, damage to associated equipment, cost of capital, cost of substitute products, facilities, services or replacement power, downtime costs, or claims of buyer's customers for such damages. This Limited Warranty does not include freight charges for equipment or component parts, to and from the factory, services such as maintenance or inspection, repair or damage due to negligence such as freezing conditions, incorrect installation, nor acts of God. It also does not include refrigerant or other expendable materials. The liability of the manufacturer shall not exceed the repair or replacement of defective parts under this Limited Warranty. This Limited Warranty also does not include unnecessary service calls due to erroneous operational reports, external valve positions, or electrical service. If a non-warranty service call is made, and the homeowner is unwilling to pay for the service call, this Limited Warranty will be voided. This Limited Warranty is voided if the product is repaired or altered by any persons or agencies other than those authorized by the manufacturer. This Limited warranty applies only within the continental USA. For warranty outside the continental USA, contact the manufacturer.

You **MUST** retain your purchase receipt along with this form. In the event you need to exercise a warranty claim, you **MUST** present a **copy** of the purchase receipt at the time of service. Please call the manufacturer at 1-877-278-2797 for service or return authorization and instructions.

DO NOT MAIL THIS FORM TO the manufacturer. Use this form only to maintain your records.

MODEL NO. _____ SERIAL NO. _____ INSTALLATION DATE _____